

J-300™ COLLECTION



JACUZZI STARTED AN INDUSTRY

Jacuzzi.® Well on its way to becoming a household name back in the early 1900s, “Jacuzzi” is now known the world over as the leading brand in hot tub design and manufacturing. This spirit of innovation started with the Jacuzzi brothers, who came to the U.S. from Italy. Roy Jacuzzi, a son of one of the brothers, invented the whirlpool bath, and went on to design the first portable “hot tub.” Eventually, the Jacuzzi product line grew to include bath and plumbing products, as well as portable spas. Over five decades of design and development at Jacuzzi have resulted in superior hydrotherapy: water that moves you to feel renewed, refreshed, and reconnected.

| experience |



The Jacuzzi brothers constructed the first enclosed-cabin monoplane. They applied their knowledge of hydraulics in the agricultural and aviation industries before going into hydrotherapy.



Roy Jacuzzi incorporated jets into the sides of a tub to invent the first self-contained, fully integrated, portable hot tub. In 1956, he was inducted into the National Kitchen & Bath Hall of Fame.



The first submersible pump was created by the Jacuzzi brothers over 50 years ago.



Besides holding the first whirlpool bath patent, Jacuzzi owns 250 worldwide patents for advancements in pump systems, jet technology, air controls and product design. This ongoing commitment to innovative product development ensures Jacuzzi's leadership position in the industry, and sets standards the world over.

50
YEARS
OF HYDROTHERAPY

Jacuzzi



Jacuzzi continues to earn awards and recognition from industry groups and consumer organizations for excellence in design, manufacturing and customer service.





The way the jets in a Jacuzzi hot tub mix air and water produces sensations you won't get anywhere else. There are patented jets that pull air from all around their edges. These stir up a 50/50 air-to-water mix that massages deeply, yet gently, at the same time. Other jets in the line let you switch from uni-directional to rotating action with just a spin of the nozzle. The entire Jacuzzi PowerPro® jet system is supported by patented high-volume, low-pressure pumps, designed to deliver a hydrotherapeutic massage similar to the type recommended by professionals. Integrated into the PowerPro system, Jacuzzi jets are the most efficient way to move water, an effective way to move you.

| let go |



PowerPro BX Jets [the bubblers]

The new BX "Bubbler" Jet represents another Jacuzzi milestone in jet technology. As part of the exclusive ProAir™ Lounge system, this unique patent-pending jet massages the calves with a comforting yet rejuvenating bubbling effect.



PowerPro FX Jets [spiral stream]

Jacuzzi PowerPro FX Jets' unique spiral action sends an energetic stream of air and water that's perfect for smaller muscle groups. Adjustable to high and low pressure, FX Jets relieve muscle tension at pressure points in the shoulders, neck, back, calves, and feet.



PowerPro LX Jets [luxury personalized]

The LX Jet propels an extravagant swirl of relaxing and rejuvenating bubbles. With just a touch, you can change an LX Jet's flow from a single directional massage to a rotating pattern. This creates a luxurious, dual-massage action.



PowerPro FX2 Jets [FX on overdrive]

PowerPro FX2 Jets are a larger and more powerful version of the Jacuzzi PowerPro FX Jets. They generate a surging hydrotherapeutic massage without moving parts. Their distinct spiral action provides a vigorous stream of air and water, ideal for relieving tension in the shoulders, back, calves and feet.



PowerPro MX Jets [maximum power]

This is the original Jacuzzi jet, perfected. Virtually every jet manufactured today is based on this unique and innovative design. Jacuzzi's PowerPro MX Jets deliver the maximum volume of water per minute — more than any other jet available today. The big, bold massage action of the MX Jet feels comforting as it works deeply to soothe tired and sore muscles.



Jacuzzi jets are so customized, you can see the differences — note the soft bubbling of the BX calf jets versus the bold stream from the MX back jets.



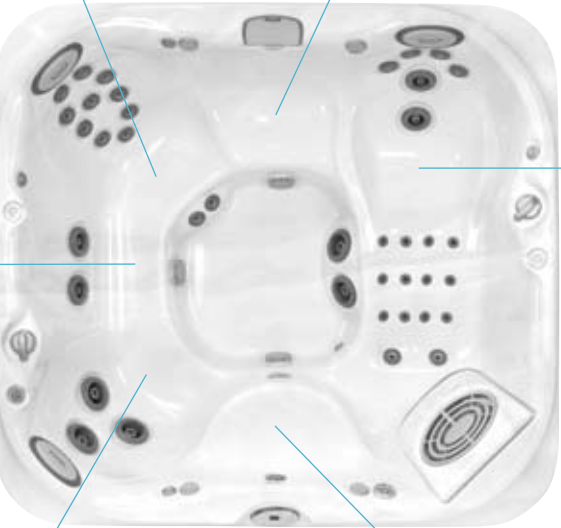
ENGINEERED SEATING

Sit in a Jacuzzi without a drop of water in the spa, and you will be convinced that comfort was the first design consideration. Once your J-300 Collection spa is filled with water, note that every jet is embedded precisely where it will perform most effectively. Controls are within easy reach. Smooth surfaces and soft sculpting make it easy to move around freely, without running into the hard edges found in other hot tubs. Another great design feature: new MicroSpeakers built into the sides of the spa, near the seats. They deliver crisp sound from the AquaSound™ Stereo, with its new Auxiliary MP3 jack. Comfort, hydrotherapy and an excellent sound system: Jacuzzi seating is engineered for your pleasure.

| relax here |

The FX10 Therapy Seat
10 PowerPro FX Jets are set in a seat styled for maximum therapy and versatility. Stimulating, spiral-action jets with adjustable pressure massage the back and neck. Change the jet stream on PowerPro FX Jets for a personalized massage.

LX Jet Seat
The LX jet seat relieves lower back pain combined with maximum MX foot therapy. Adjust the action of the LX Jets from a single direction to rotational, for a purely personal massage. MX Jets work on the feet as you relax in luxury.



Soaking Seat
Sink into a comforting non-jetted seat and enjoy the Water Rainbow® waterfall.

ProAir Lounge Seat with BX Bubbler Jets
Designed to distribute body weight evenly for an effective massage. FX and LX Jets massage the neck and back and new BX Jets target the calves with an invigorating, bubbling massage. FX Jets penetrate the muscles of the feet with therapeutic relief.

MX Jet Therapy Seat
Deeply contoured seat and cushioned headrest position you for a soothing high volume, low pressure massage.

Transition Seat
Designed for sitting partially in or out of the spa, the Transition Seat lets you leave the warmth of the spa gradually.



HYDROTHERAPY

Jacuzzi has popularized the ancient practice of water massage therapy for a new age. For thousands of years, people have been drawn to water that naturally springs from the earth. Relaxing heat, muscle stimulation, and lighter-than-air buoyancy relieve physical burdens and brighten the spirits. Researchers have observed the healing effects of hydrotherapy: improved circulation, decreased joint pain, acceleration of the body's natural healing processes. No scientific research is needed for these benefits: the instinctive comfort of settling into jet-driven water; the way stress seems to release itself into the steam; and the spring in your step after a hydrotherapeutic session in a Jacuzzi hot tub.

| heal |

Why hydrotherapy works

Water under pressure from jets can alleviate the muscle tightness produced by stress and anxiety through the application of direct massage and heat. From a targeted stream for deep-tissue massage to relaxing micro-bubbles, Jacuzzi PowerPro jets give you a variety of hydrotherapeutic massage types.



How hydrotherapy heals

Water is used in physiotherapy to speed recovery from injuries, relieve muscle soreness by facilitating the removal of lactic acid; open the blood vessels to improve circulation; help the muscles around arthritic joints relax, and promote the flow of endorphins.



Who benefits from hydrotherapy

Warm water therapy in a Jacuzzi hot tub works for people of all shapes, sizes, and stress levels. Some people need a pulsating, strong jet stream for working knots out of large muscles; others crave a soothing, warm water retreat that clears the mind as it relaxes the body. And sometimes you want both! Every Jacuzzi hot tub delivers plenty of massage varieties, and almost anyone – short or tall – will find at least one perfect place to sit in any of the J-300 Collection hot tubs.



"Hydrotherapy is often recommended to patients with arthritis as water provides a range of benefits..."

Annals of Rheumatic Disease
2003;62;1162-1167





JACUZZI AT HOME

Imagine the difference a Jacuzzi J-300 Signature Collection hot tub will make in your life. A refuge from the pressures of work, a rejuvenating break from the constant challenges of modern life, a revitalizing spot for enjoying the company of friends and family. A Jacuzzi hot tub provides a place for calm respite in your life, and it blends beautifully into your environment. The J-300 Collection includes a broad range of spa sizes, from the compact J-315™ model (perfect for a condo-sized patio) to the J-365™ spa, which seats up to seven adults. Simply find the perfect place for a J-300 hot tub in your backyard or home, and begin the transformation, outside and within.

| envision it |

How a Jacuzzi J-300 Signature Collection hot tub improves your backyard.

The colors of nature, the soothing rhythm of a waterfall, the splash that says it's time to party – a Jacuzzi J-300 hot tub is a perfect focal point for outdoor relaxation, family time, and socializing.



Planning starts with the basic elements of outdoor design: existing landscaping, lighting, decks and shade structures.

Planning tips

Allow for access to the spa's equipment compartment and side panels.

Think about how you will use your spa. If you host family gatherings and parties, leave room for activity, as well as optional accessories, like matching bars and stools around your spa.

Plan ahead for getting in and out of the spa in cold or very hot weather. Will it be close to your house or near a place to change clothes?

Consider shading your spa from the hot sun with trees or a gazebo structure.

Is your spa private? Check the views from your neighbors' homes – and don't forget that bare trees don't provide much sheltering privacy during the winter months.

Plan your view from the spa. Is there a garden view or a grove of trees that you find pleasing?

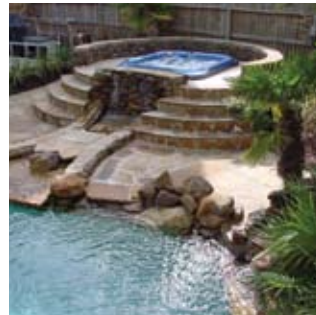
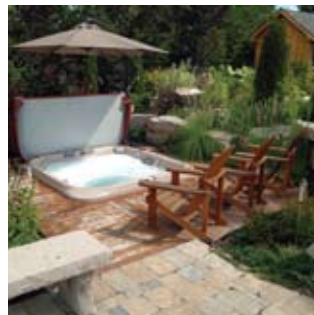
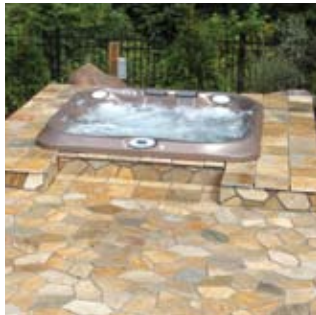
Consider planting flowers in pots nearby, or adding a gazebo around your spa to create a sheltered setting.



Share the Experience

Family and friends love to be a part of the unique excitement of owning a Jacuzzi hot tub. Your Jacuzzi Hot Tubs dealer can offer you the best professional advice about selecting a hot tub, planning its location, preparing for installation, and knowing what to expect in terms of maintenance.

See your Jacuzzi dealer for more ideas or online at www.jacuzzi.com.





J - 3 6 5™

Jacuzzi designs water to move in ways that play to all of the senses in the J-365. Listen to the sounds of the Water Rainbow waterfall. Give in to the mesmerizing sight of cascading water, backlit with brilliant color. Let the water flow through your fingertips as you relax in a PowerPro Therapy Seat, with footmound jets within easy reach. Sculpted seats and pillow headrests support your body, therapeutic jets speed the healing of sore muscles and relieve tension, buoyancy lightens the burden on aching joints. There is a sense of being comforted in body and spirit in the J-365 model from Jacuzzi.

Dimensions: 91 x 84 x 38 in 231 x 213 x 97 cm	Water Capacity: 374 US gal 1,416 liters	Total PowerPro Jets: 32	Seating Capacity: 6 – 7 Adults	Optional: AquaSound™ Stereo with Auxiliary MP3 jack
--	--	------------------------------------	--	---



NEW optional
integrated AquaSound
Stereo MicroSpeakers



Five PowerPro
Therapy Seats
including FX 10
Therapy Seat



Footmound with
PowerPro Jets



NEW ProLites™ LED
Lighting Package
• Lighted beverage
coasters in
cupholders
• Lighted pillows



ProTech™ Control
System with
settings lock





J - 3 5 5™

There is something to be said for having it all, and the J-355 gives it to you. Check out the new bubbling jets, the new ProAir Lounge seat, the engineering marvel known as the FX 10 Therapy Seat, and the optional AquaSound™ Stereo / CD system with an MP3 jack. Less obvious is the fact that all of the systems in a Jacuzzi spa – heat, filtration, jets – run efficiently, reliably, and cost effectively. The pre-installed ProClear™ Ozone injector helps the water stay cleaner longer when an optional CD ozone generator is installed. Standing behind the systems, construction, and performance is one of the best warranties in the industry. The Jacuzzi name says everything about quality.

Dimensions: 91 x 84 x 38 in 231 x 213 x 97 cm	Water Capacity: 363 US gal 1,374 liters	Total PowerPro Jets: 28 + 12 BX Jets in ProAir Lounge	Seating Capacity: 5 - 6 Adults	Optional: AquaSound Stereo with Auxiliary MP3 jack
--	--	--	--	--



NEW Exterior LED
Accent Lighting option



ProAir Lounge
Seat with NEW
BX Bubbler Jets



ProClear Water
Management System
with dual filtration

NEW AquaSound Stereo option
with Auxiliary MP3 jack plus:

- Hard-wired remote control
- CD player and AM-FM radio
- 4 MicroSpeakers





J - 3 4 5™

The new J-345 hot tub is an improved version of what was already one of Jacuzzi's most popular hot tubs. Balanced in design and dimension, the J-345 is loaded with PowerPro jets and body-hugging seats. Like other models in the Collection, it has been fitted with new, brighter lighting, including illuminated pillows and cup holders, a redesigned waterfall and an improved filter shield. You can enjoy your J-345 at a moment's notice, too, thanks to the ProClear Water Management System, which optimizes filtration. The advanced ProClear Ozonator option and the ProClear Natural Purifier work with the system to enhance the water quality, while minimizing chemical usage.

Dimensions: 84 x 84 x 36 in 213 x 213 x 91 cm	Water Capacity: 336 US gal 1,272 liters	Total PowerPro Jets: 27	Seating Capacity: 4 – 5 Adults	Optional: AquaSound Stereo with Auxiliary MP3 jack
--	--	------------------------------------	--	--



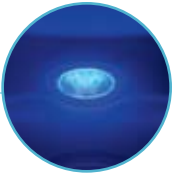
In-Home Spa Status
Display option



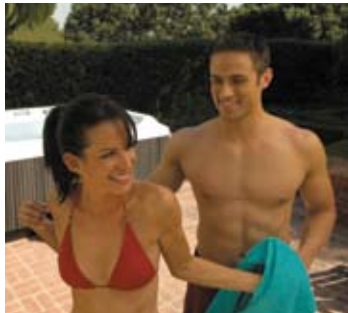
NEW Ergonomic
Diverter Knob



PowerPro MX
Jet Seating with
calf-massaging
FX Jets



NEW High-Intensity
Interior Spa Lighting





J - 335™

Warming massage feels good, and it is therapeutic. Warm water in motion stimulates endorphins, the natural painkillers your body puts to good use in so many ways. The Jacuzzi FX10 Therapy Seat in the J-335 (and other models) may be one of the best places on the planet to experience the benefits of hydrotherapy. Every curve in the FX10 Therapy Seat has been designed to fit the body; each of the adjustable-stream FX Jets is positioned to direct water with precision and strength. Bonus: the J-335 includes a lounge seat — another one of the world's best places to enjoy a hydrotherapeutic massage.

Dimensions: 84 x 84 x 36 in 213 x 213 x 91 cm	Water Capacity: 358 US gal 1,355 liters	Total PowerPro Jets: 24 + 12 BX Jets in ProAir Lounge	Seating Capacity: 4 - 5 Adults	Optional: AquaSound Stereo with Auxiliary MP3 jack
--	--	--	--	--



Stainless-Steel
Escutcheons
optional



ProAir Lounge
with NEW
BX Bubbler Jets



NEW curved-profile
Water Rainbow
waterfall with
LED backlighting



NEW ProLites
Lighted Pillow
Headrests





J - 3 2 5™

Take a close look at the photo of the J-325 spa below. Note how it's cozy and spacious at the same time, with side-by-side seating that includes armrests, plus enough room to accommodate four adults comfortably. You can experience an invigorating hydrotherapeutic session in a seat that includes swirling-motion PowerPro LX Jets as well as stimulating FX Jets. Hold hands and gaze at each other through a waterfall, or work out the stress of the day with an LX Jet foot massage. With new features and improvements, the J-325 model definitely deserves a closer look.

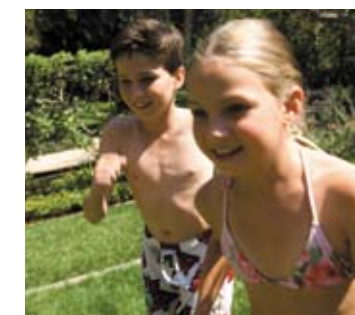
Dimensions: 76 x 84 x 34 in 193 x 213 x 86 cm	Water Capacity: 320 US gal 1,211 liters	Total PowerPro Jets: 15	Seating Capacity: 4 Adults
--	--	------------------------------------	--------------------------------------



NEW Roasted
Chestnut ProEndure™
cabinet color with
Bordeaux cover



Angled LX Foot
Massage Jets

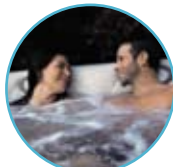




J - 3 1 5™

A waterfall in a condo. Foot massage at midnight. Conversation in the lounge. The J-315 presents pleasant possibilities with very few responsibilities. Sized for compact spaces, the J-315 fits through standard doorways for easy delivery and set up. Maintenance is simple, with the reliable Jacuzzi 24-hour water purification system in place. Other energy-saving features: full-foam insulation, controls that let you lock in temperature settings, and Tri-Fusion System™ bonded construction. The same quality innovation built into every Jacuzzi hot tub is available in the J-315, making it a very attractive possibility.

Dimensions: 76 x 66 x 32 in 193 x 168 x 81 cm	Water Capacity: 200 US gal 757 liters	Total PowerPro Jets: 13	Seating Capacity: 2 – 3 Adults
--	--	------------------------------------	--



Side-by-Side Seating



NEW Rocker
Switch Air
Controller

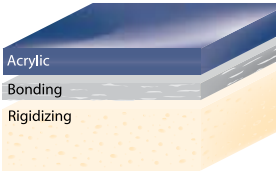


LX Jet Therapy Seat



With over 50 years of experience, Jacuzzi is the leader in hydrotherapeutic innovation. The ProClear Water Management System in the J-300 Signature Collection is an industry benchmark; the culmination of decades of testing and improvements. It ensures clear water with minimal chemical maintenance, and low operating costs. Patented high-volume, energy-efficient technology includes an efficient 24-hour circulation pump (water in motion is cleaner water). Self-activated purification keeps plumbing components clean and filters surface particles, even when the spa is not in use. All of the 2007 J-300 models include a new and improved filter shield, as well. Add bromine or the ProClear Natural Purifier (options) for water purity that lasts longer.

[| compare |](#)



Tri-Fusion System Shell

Three layers are combined for strength and durability:

Beauty – a seamless sheet of durable acrylic in long-lasting colors.

Bonding – vinyl ester blocks vapor and moisture and resists outside temperature variations.

Brawn – special resins provide superior structural support.

Full-Foam Insulation

High-density foam plus a lighter foam fill the space between the shell and the spa's skirt, reducing heat loss and lowering energy bills.

Jet Pumps

High-volume, energy-efficient pumps power the jets with steady reliability.

ProTech Control System

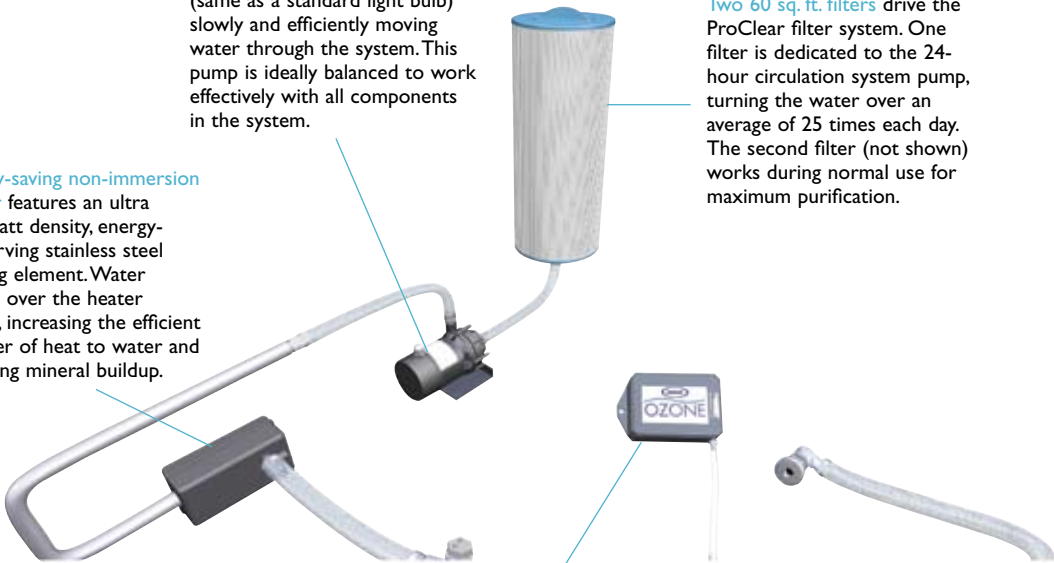
Customize the water and air pressure, and select various jet patterns. Precise programming of filtration cycles and temperature helps you control energy costs. The System also allows you to lock in your settings to prevent unauthorized access.



24-hour circulation pump operates on .5 amp of electricity (same as a standard light bulb) slowly and efficiently moving water through the system. This pump is ideally balanced to work effectively with all components in the system.

Energy-saving non-immersion heater features an ultra low-watt density, energy-conserving stainless steel heating element. Water passes over the heater slowly, increasing the efficient transfer of heat to water and reducing mineral buildup.

Two 60 sq. ft. filters drive the ProClear filter system. One filter is dedicated to the 24-hour circulation system pump, turning the water over an average of 25 times each day. The second filter (not shown) works during normal use for maximum purification.



ProClear Ozonator optional unit utilizes corona discharge technology. It produces three times the ozone concentration over standard UV-ozone systems. The ProClear process will consistently produce cleaner, clearer water day after day for worry-free use.

ProClear Ozone Injector is a patented, unique feature, standard on all Jacuzzi spas, that infuses a steady stream of ozone into the spa's water to boost purification.



FORWARD-LOOKING DESIGN

The J-300 Collection hot tubs are designed with sensuous style – backlit waterfalls, cradling seats, and gently curved hand supports. Every need is anticipated, with features like the intuitive-use, lighted control panels, illuminated beverage holders, and ergonomic diverter handles and rocker-switch air controls. Of course, all components are quality constructed to guarantee high performance for years with a minimum of care. The Jacuzzi quality assurance process includes filling each spa with water, not once but twice, for complete wet-testing. Every system in every spa is checked before shipping to ensure peak operating efficiency, and every spa is backed by the famous Jacuzzi warranty.

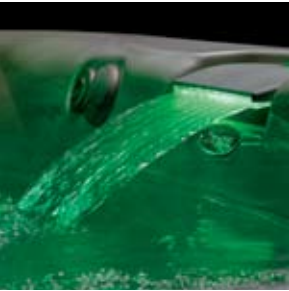
| show off |



The Water Rainbow® Waterfall

The newly redesigned Water Rainbow waterfall with its curved edge creates a dramatic cascade of water. It casts a brighter light on the water than ever before, adding to the calming effect and visual beauty of your hot tub.

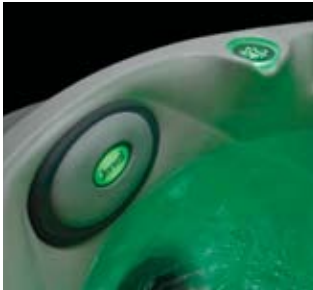
- Fully adjustable stream
- Selection of backlight colors
- Coordinates with new high-intensity interior spa lighting



ProLites LED Lighting System

The newly designed J-300 Signature Collection lighting system (available on select models) uses LED technology to produce more light per watt than incandescent bulbs. LEDs emit colored light without the use of color filters, and focus more intensely and brightly. They also last longer and cost less to use than other types of bulbs.

- ProLites LED Lighted Beverage Coasters
- ProLites LED Pillow Headrests
- ProLites LED Interior Spa Illumination
- Water Rainbow Waterfall with Colored LED ProLites
- ProLites LED Exterior Accent Lighting (see pg.28 for more information)



SPECIAL EXTRAS

A few options and accessories can truly personalize your Jacuzzi hot tub. Do you like to download your own music? Choose a J-300 Collection model with the AquaSound Stereo System option. It now includes an auxiliary MP3 jack. Interested in natural alternatives to chemicals? Jacuzzi offers environmentally neutral options for water purification. Like to entertain? Pick out bars, stools, and steps that match the cabinets of your J-300 hot tub. Discover how easy it is to help your Jacuzzi live up to its full potential. Visit www.jacuzzi.com or your local dealer for more information.

| accessorize |



Design an entertainment area around your J-300 Collection hot tub with accessories shown in the the Jacuzzi Backyard Collection brochure. Synthetic steps, stools, bars, surrounds, gazebos, covers and other items are built to coordinate with the color, shape and size of your spa. More information is available at www.jacuzzi.com.



ProTemp™ In-Home Spa Status Display
Check on the temperature of the water in your J-300 Collection hot tub without venturing outside. A glance at the In-Home Spa Status Display option saves you a trip outdoors on those cold, wintry evenings. See dealer for details.



AquaSound Stereo System with Auxiliary MP3 jack
New for 2007: an MP3 jack along with high-fidelity, marine-grade speakers, an AM-FM radio and a CD player. New micro-speakers mounted into the spa near the seats deliver great sound, and the stereo remote control is hard-wired into the spa, close to where you sit.



ProLites Exterior Corner LED Accent Lighting
Exterior lighting can accentuate the area surrounding your spa at night. Baseboard light strips to the bottom of your spa's cabinets provide drama as well as light. And LED ProLites use just 5% of the energy consumed by a 12-watt bulb.

ProClear Ozonator
Ozone is universally considered to be among the safest disinfectants available. It reduces the need to add chemicals to your spa, while eliminating bacteria and micro-organisms. Jacuzzi Hot Tubs' ProClear Ozonator is a system that infuses more ozone into the spa water than most other systems, using an efficient electrical discharge element.

Locking Spa Covers
Spa covers constructed with high-density foam covered by weather-resistant material insulate the spa and retain the water's heat. Spa covers lock in place on all corners to help prevent unwanted access, and handles are conveniently located both inside and outside.



PERSONAL CHOICE

What colors move you? Color preferences are part instinct, part design sense. When you visit a Jacuzzi Hot Tubs showroom, notice which acrylic spa colors inspire you. Take note of the natural-looking cabinetry finishes, as well. At home, consider where you will install your Jacuzzi spa and the surrounding area. Your Jacuzzi Hot Tubs dealer can help you select which colors will look best in your backyard or patio setting, and can also guide you in deciding which Jacuzzi spa model works best for your lifestyle.

| colors |

ProEndure Cabinetry

Sturdy and attractive cabinets are made of UV-resistant, wood-tone material that frames the structure and coordinates with the spa shells, from the light maple tones of Harvest Wheat to the deep, rich color of Roasted Chestnut. Optional UV and weather-resistant spa covers come in your choice of colors. Go to www.jacuzzi.com to find coordinating accessories that match the spas' cabinetry.



Harvest Wheat



Bordeaux



Silverwood



Bordeaux



Harvest Wheat



Autumn Red



Silverwood



Roasted Chestnut



Platinum



Sahara



Sand*



Desert Sand



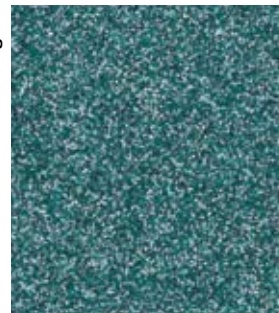
Azure



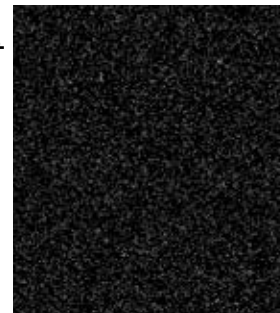
Cobalt



Bluegrass

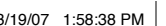


Graphite



*Sand available in North America only. Selection may vary by dealer.



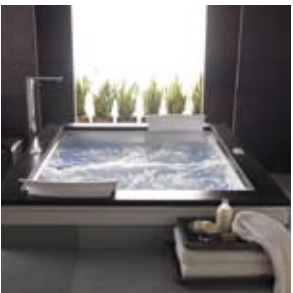


MORE JACUZZI COLLECTIONS

The Jacuzzi® label is more than a cherished icon, it is the sign of innovative design in water-in-motion products for home and commercial use. Known for starting the hot tub industry, Jacuzzi now offers a line of spas for every style and budget. The J-400 Designer Collection breaks new ground with its dramatic, sweeping profile and luxury appointments. The spas of the J-200 Classic Collection go where bigger hot tubs wouldn't dare, and bring with them all the most popular Jacuzzi features. Backyard, bath, or kitchen, the Jacuzzi name stands for beauty, versatility, and excellence.

Water That Moves You®

Jacuzzi® is the leading global manufacturer and distributor of bath and plumbing products for the residential, commercial and institutional markets. In addition to innovative hot tubs, products include kitchen fixtures, whirlpool baths, showers, and bathtubs.



Information on the J-400 and J-200 Collections is available at your local dealer.

J - 4 8 0™

Seating Capacity 6 adults
Total PowerPro Jets 48
Waterfalls 2 WaterColour™ waterfalls
AquaSound Stereo w/iPod Docking Station Optional



J - 4 7 0™

Seating Capacity 6-7 adults
Total PowerPro Jets 39
Waterfalls 2 WaterColour™ waterfalls
AquaSound Stereo w/iPod Docking Station Optional



J - 4 6 5™

Seating Capacity 4-5 adults
Total PowerPro Jets 37
Waterfalls 1 WaterColour™ waterfall
AquaSound Stereo w/iPod Docking Station Optional



J - 4 6 0™

Seating Capacity 5 adults
Total PowerPro Jets 33
Waterfalls 1 WaterColour™ waterfall
AquaSound Stereo w/iPod Docking Station Optional



classic |

J - 2 3 0™

Seating Capacity 5 adults
Total PowerPro Jets 33



J - 2 2 0™

Seating Capacity 4 adults
Total PowerPro Jets 21



J - 2 1 0™

Seating Capacity 4 adults
Total PowerPro Jets 19





Your Jacuzzi Hot Tubs Dealer is:



Hot Tubs

www.jacuzzi.com

14525 Monte Vista Avenue

Chino, CA 91710 / U.S.A.



© 2007 Jacuzzi Hot Tubs. All rights reserved. Jacuzzi® is a registered trademark of Jacuzzi Inc. used with permission. All other brands, product names, company names, trade names, trademarks and service marks used are the property of their respective owners. Jacuzzi Hot Tubs may make product modifications and enhancements. Specifications may change without notice. International products may be configured differently to meet local electrical requirements. Dimensions are approximate. Manufactured under one or more United States patent numbers. Other patents may apply.

2890-0105 Rev. B / 0307 - 10K

Printed in the United States

